



Weifang Master Power
Equipment Co., Ltd.

潍坊万仕隆动力设备有限公司
Weifang Master Power Equipment Co., Ltd.



关于我们

ABOUT US

WEIFANG MASTER POWER EQUIPMENT CO., LTD. Engaged in the research and development, production, sales and service of natural gas, biogas, oilfield associated gas, coalbed gas, biomass gas and other combustible gas generator sets as well as diesel generator sets. The company is located in Weifang City, Shandong Province, known as "China Power City". The generator sets produced by the company, power from 10kW to 3000kW, reasonable design of product structure, process, low noise, small vibration, easy to start, reliable performance. Products are widely used in oil and gas mining industry, biogas engineering, coal mine development, large and medium-sized livestock and poultry breeding industry, sewage treatment, waste treatment and other industries. Our products are sold to more than 30 countries and regions in Europe, America, Africa, Southeast Asia, West Asia and so on. We have established long-term and stable cooperative relations with more than 20 countries in the world. Domestic sales reached 28 provinces, municipalities, autonomous regions. We have established a stable cooperative relationship. With advanced technology and innovative consciousness, rigorous management system and perfect after-sales service network, the company continues to provide users with a full range of safe, efficient and complete power solutions.

THE ENGINE BRAND 主机品牌



CUMMINS 康明斯



DEUTZ 道依茨



WEICHAI 潍柴



YUCHAI 玉柴



SHANGCHAI 上柴



DOOSAN 斗山

THE HOST BRAND 电机品牌



DOOSAN 美奥迪



STAMFORD 斯坦福



LEROI SOMER 利莱森玛



ENGGA 英格

THE HOST BRAND 模块品牌



COMAP 科迈



DEEPSEA 深海



LIXISE 力克赛



SMARTGEN 众智

WEICHAI

潍柴

WEICHAI GENERATOR SETS ARE WIDELY USED IN SHIPS, NATIONAL DEFENSE, COMMUNICATIONS, PETROLEUM, MEDICAL, MINING, FIELD RESCUE, AGRICULTURE, ANIMAL HUSBANDRY AND SPARE POWER SUPPLY.

Characteristics of Weichai Diesel Generator:

- The generator set is powered by diesel engine of Weifang Weichai Power Co., Ltd. of Shandong Province, which is
- Supported by well-known brand alternators.
- Wide range of unit power
- Low fuel consumption, low emission and low noise
- The generator set has excellent performance, advanced technology, reliable operation and convenient maintenance.
- High voltage regulation accuracy, good dynamic performance, compact structure and long service life
- Weichai products have been experimented with high altitude, high temperature and high cold , and they are highly adaptable to the environment.

It takes only a few seconds to start quickly and achieve full power quickly. The shutdown process with full load (normal 5-30 MIN) within 1 minute of emergency is short and can start and stop frequently.

- Maintenance operation is simple, fewer people, easy maintenance during standby.
- The lowest comprehensive cost of construction and power generation of diesel generator sets
- Product classification is rich, the type is divided into: marine generator sets, land generator sets; functional structure is divided into: automation generator sets, rain-proof generator sets, silent generator sets, trailer generator sets; industry is divided into: civilian generator sets, military generator sets, oil field generator sets, telecommunications generator sets, etc.

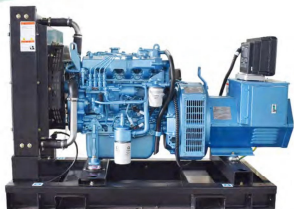
潍柴发电机组广泛应用于船舶、国防、通讯、石油、医疗、矿山、野外救援、农牧业及备用电源等。

潍柴柴油发电机组特点:

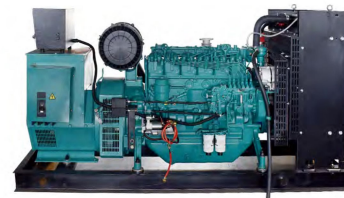
- 发电机组采用山东潍坊潍柴动力股份有限公司柴油发动机为动力，配套知名品牌发电机。
- 机组功率范围广：10~4300KW
- 低油耗、低排放、低噪音
- 机组性能优良，技术先进，工作可靠，维护方便
- 调压精度高，动态性能好，结构紧凑，使用寿命长
- 潍柴产品常年进行高海拔、高温、高寒，“三高”实验，环境适应性强
- 启动迅速、并能很快达到全功率只需几秒，应急1分钟内带到期全负荷（正常5~30MIN）停机过程短，可以频繁起停。
- 维护操作简单，人少，备用期间保养容易
- 柴油发电机组的建设与发电的综合成本最低
- 产品分类丰富，类型上分为：船用发电机组、陆用发电机组；功能结构上分为：用途自动化机组、防雨棚机组、低噪音机组、拖车移动电站机组；行业上分为：民用发电机组、军品发电机组、油田发电机组、电信发电机组等。

WEICHAI
潍柴

Weichai genset 潍柴发电机组



30KW GENSET



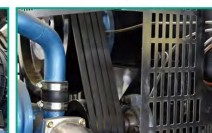
100KW GENSET



400KW GENSET



1000KW GENSET



Model 机组型号	Rate Power 功率		Current (A) 电流	Engine Model 发动机型号	Cylinder No. 缸数	Bore*Stroke (mm) 缸径*行程	Displace- ment (L) 排量	Oil Capacity (L) 润滑油 容量	Fuel consumption g/kw.h 油耗率	Open Type Size mm L*W*H 开架尺寸	Open Type Weight kg 开架重量
	kw	kva									
BST-20GF	20	25	36	WP2.3D25E200	4	90*100	2.54	11	205	1450*700*1100	500
BST-24GF	24	30	43	WP2.3D33E200	4	90*100	2.54	11	208	1600*760*1200	580
BST-30GF	30	37.5	54	WP2.3D40E200	4	89*92	2.54	11	208	1600*760*1200	580
BST-40GF	40	50	72	WP2.3D48E200	4	90*100	2.54	11	205	1600*760*1200	650
BST-50GF	50	62.5	90	WP4.1D66E200	4	105*130	4.32	11	205	1720*760*1250	830
BST-50GF	50	62.5	90	WP4D66E200	4	105*130	4.5	10	198	1900*920*1350	1000
BST-64GF	64	80	108	WP4.1D80E200	4	105*130	4.32	10	205	1750*760*1250	900
BST-75GF	75	93.75	135	WP4D100E200	4	105*130	4.5	10	198	2100*920*1350	1200
BST-80GF	80	100	144	WP4D108E200	4	105*130	4.5	10	198	2100*920*1350	1250
BST-100GF	100	125	180	WP6D132E200	6	105*130	6.75	18	198	2380*950*1450	1450
BST-120GF	120	150	216	WP6D152E200	6	105*130	6.75	18	198	2450*950*1450	1550
BST-150GF	150	187.5	270	WP6D167E200	6	105*130	6.75	18	190	2450*950*1550	1700
BST-160GF	160	200	288	WP10D200E200	6	126*130	9.726	23	210	2800*1150*1750	1850
BST-200GF	200	250	360	WP10D238E200	6	126*130	9.726	23	210	2900*1150*1750	2150
BST-220GF	220	275	396	WP10D264E200	6	126*130	9.726	23	210	2950*1150*1750	2290
BST-250GF	250	312.5	450	WP12D317E200	6	126*135	9.726	23	198	3000*1200*1850	2590
BST-300GF	300	375	541	WP13D385E200	6	127*165	12.54	36	198	3050*1250*1850	2800
BST-320GF	320	400	576	WP13D385E200	6	127*165	12.54	36	198	3050*1250*1850	2800
BST-350GF	350	437.5	630	WP13D405E200	6	127*165	12.54	36	198	3150*1250*1850	3000
BST-360GF	360	450	648	6M26D447E200	6	150*150	15.9	50	197	3750*1360*1930	3300
BST-400GF	400	500	720	6M26D484E200	6	150*150	15.9	50	197	3750*1500*1850	3370
BST-450GF	450	56.5	810	6M33D572E200	6	150*185	15.9	60.5	197	3750*1600*2050	3500
BST-500GF	500	625	900	6M33D605E200	6	150*185	15.9	60.5	197	3800*1600*2050	3600
BST-650GF	650	812.5	1170	12M26D792E200	12	150*150	31.8	113	197	4300*1990*2150	6900
BST-750GF	750	937.5	1314	12M26D902E200	12	150*150	31.8	113	197	4300*1990*2300	7000
BST-800GF	850	1062.5	1440	12M26D968E20024	12	150*150	31.8	113	197	4300*1990*2300	7150
BST-900GF	900	1125	1620	12M33D108E200	12	150*185	31.9	146	197	4600*2190*2400	8100
BST-1000GF	1000	1250	1800	12M33D1210E200	12	150*185	31.9	146	197	4750*2190*2400	8250



• **Yuchai is with more than 40years history of manufacturing diesel generator.** Which is widely using military,civil,marine etc fileds.The fuel consumption and lub oil consumption is better than the similar product in domestic.Low shaking,low noise,emissions meet to European standards.Which leading the China environment protection requirements.Strong powerful,high reliability, which can output 110% loading within 1hrs,The quality meet or over the national related standards.

• **玉柴生产柴油发电机组已有40多年的历史**，产品广泛用于军用、民用、船用等领域，燃油消耗率和润滑油消耗率远优于国内同类产品；震动小、噪声低、排放达到欧洲标准，引领国家环保要求；功率强劲，可靠性高，能在1小时内输出额定功率110%超负载功率；产品质量全面达到或超过国家有关标准。

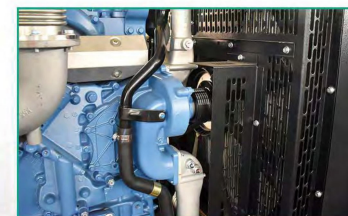
Model 机组型号	Rate Power 功率		Current (A) 电流	Engine Model 发动机型号	Cylinder No. 缸数	Bore*Stroke (mm) 缸径*行程	Displace ment (L) 排量	Oil Capacity (L) 润滑油 容量	Fuel consumption g/kw. h 油耗率	Open Type Size mm L*W*H 开架尺寸	Open Type Weight kg 开架重量
	kW	kVA									
BST-18GF	18	22.5	32.4	YC2108D	2	108*120	2.2	8	250	1650*650*1100	721
BST-24GF	24	30	43.2	YC2115D	2	115*120	2.49	8	248	1750*700*1250	930
BST-30GF	30	37.5	54	YC2115ZD	2	115*120	2.11	8	242	1750*700*1250	930
BST-40GF	40	50	72	YC4D60-D21	4	108*115	4.21	12	205	1750*700*1250	930
BST-50GF	50	62.5	90	YC4D85Z-D20	4	108*115	4.21	12	200	2100*1150*1300	1265
BST-60GF	60	75	108	YC4D90Z-D20	4	108*115	4.21	12	200	2100*1150*1300	1265
BST-64GF	64	80	115.2	YC4A100Z-D20	4	108*115	4.21	12	205	2100*1150*1300	1265
BST-90GF	90	112.5	162	YC6B135Z-D20	6	108*125	6.87	16	202	2700*1250*1650	2000
BST-100GF	100	125	180	YC6B155L-D21	6	108*125	6.87	16	200	2700*1250*1650	2000
BST-120GF	120	150	216	YC6B180L-D20	6	108*132	6.87	16	200	2700*1250*1650	2000
BST-132GF	132	165	237.6	YC6A200L-D20	6	108*132	7.26	16	195	2700*1250*1650	2000
BST-150GF	150	187.5	270	YC6A230L-D20	6	108*132	7.26	22	192	2700*1250*1650	2000
BST-160GF	160	200	288	YC6G245L-D20	6	112*132	7.80	25	195	2700*1250*1650	2000
BST-200GF	200	250	360	YC6M350L-D20	6	120*145	9.84	28	197	3500*1400*1800	2394
BST-250GF	250	312.5	450	YC6M420L-D20	6	123*145	10.34	28	195	3500*1400*1800	2394
BST-280GF	280	350	504	YC6M420L-D20	6	123*145	10.34	28	197	3500*1400*1800	2394
BST-300GF	300	375	540	YC6M480L-D20	6	131*145	11.73	33	195	3500*1400*1800	2394
BST-320GF	320	400	576	YC6M480L-D20	6	145*165	11.73	33	195	3500*1400*1800	2394
BST-350GF	350	437.5	630	YC6T550L-D21	6	145*165	16.35	28	195	3500*1400*1800	2394
BST-400GF	400	500	720	YC6T600L-D22	6	145*165	16.35	28	195	3500*1400*1800	2394
BST-440GF	440	550	792	YC6T600L-D20	6	145*165	16.35	28	195	3900*1550*2000	5231
BST-460GF	460	575	828	YC6T700L-D20	6	145*165	16.35	52	195	3900*1550*2000	5231
BST-500GF	500	625	900	YC6T780L-D20	6	145*165	16.35	52	195	3900*1550*2000	5364
BST-550GF	550	687.5	990	YC6T840L-D20	6	200*210	39.58	52	195	5800*2000*2500	5661
BST-650GF	650	812.5	1170	YC6C1020L-D20	6	200*210	39.58	180	195	5200*1700*2500	7730
BST-700GF	700	875	1260	YC6C1070L-D20	6	200*210	39.58	180	195	5200*1700*2500	7730
BST-800GF	800	1000	1440	YC6C1220L-D20	6	200*210	39.58	180	195	5200*1700*2500	9033
BST-880GF	880	1100	1584	YC6C1320L-D20	6	200*210	39.58	180	195	5200*1700*2500	9301
BST-1000GF	1000	1250	1800	YC12VC1680L-D20	12	200*210	79.17	280	195	5500*1900*2500	12810
BST-1100GF	1100	1375	1980	YC12VC1680L-D20	12	200*210	79.17	280	195	5500*2000*2500	13016
BST-1200GF	1200	1500	2160	YC12VC2070L-D20	12	200*210	79.17	280	195	5500*2000*2500	13516
BST-1320GF	1320	1650	2376	YC12VC2070L-D20	12	200*210	79.17	280	195	5500*2000*2500	13516
BST-1500GF	1500	1875	2700	YC12VC2270L-D20	12	200*210	79.17	320	195	5500*2000*2500	13516
BST-1600GF	1600	2000	2880	YC12VC2510L-D20	12	200*210	79.17	280	195	5800*2000*2500	13971



Yuchai genset 玉柴发电机组



30KW GENSET





Deutz engine including air-cooled diesel engine, water-cooled diesel engine and gas engine, has been widely used in special vehicles, engineering machinery, agricultural machinery, automobile, mining machinery, generator sets and other mechanical fields. Due to its small size, low fuel consumption and low noise, DEUTZ engine is deeply trusted by users.

Deutz Diesel generator set has reliable performance, good quality, small volume and low fuel consumption.

- Compact structure design, easy to use and maintain;
- Strong environmental adaptability, high reliability and wide application;
- Small vibration, low noise, good low temperature start-up.

道依茨发动机包括风冷柴油机, 水冷柴油机和燃气发动机, 现已广泛应用于特种车辆、工程机械、农业机械、汽车、矿山机械、发电机组等机械领域。道依茨发动机具有体积小、油耗低、噪音低等特点, 深受广大用户信赖。道依茨柴油发电机组性能可靠、品质优良、体积小、低油耗。

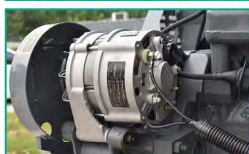
- 结构设计紧密, 使用维护方便;
- 环境适应性强, 可靠性高, 应用广泛;
- 震动小, 噪声低, 低温启动性好。



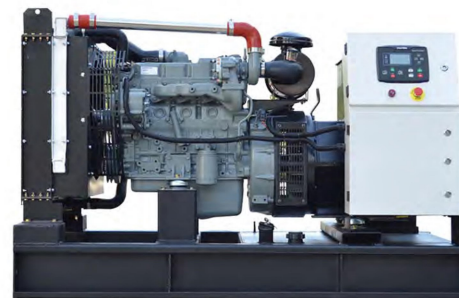
Deutz engine 道依茨发动机



30KW ENGINE



50KW ENGINE



Dalian Deutz open shelf parameter table 大连道依茨开架参数表						
Generator Power 功率	Rate current 额定电流	Engine Model 发动机型号	Host 1H power 主机1H功率	Fuel consumption 燃油消耗率	Boundary dimension 外形尺寸	Open type weight 机组重量
kw	A		KW	≤g/kw. h	L*W*H mm	KG
20	36	BFM3 G1	22	212	1610*950*1050	560
30	54	BFM3 G2	32	212	1610*950*1050	595
36	64.8	BFM3T	44	212	1995*950*1085	830
40	72	BFM3C	50	212	1995*950*1085	830
50	90	BF4M2012	60	192	1995*950*1360	995
64	115.2	BF4M2012C G1	75	192	2195*1050*1265	1180
75	135	BF4M2012C G2	93	192	2195*1050*1265	1225
100	180	BF4M1013EC G1	102	206	2395*1050*1542	1335
100	180	BF4M1013EC G2	116	206	2195*1050*1265	1335
120	216	BF4M1013FC	129	209	2395*1000*1410	1350
130	234	BF6M1013EC G1	153	198	2550*1150*1560	1665
150	270	BF6M1013EC G2	175	198	2550*1150*1560	1715
150	270	BF6M1013EC G3	183	202	2550*1250*1700	1980
200	360	BF6M1013EC G4	201	226	2550*1250*1700	2030
Parameter table for opening shelves of Bei Nei Deutz 北内道依茨开架参数表						
Generator Power 功率	Rate current 额定电流	Engine Model 发动机型号	Host 1H power 主机1H功率	Fuel consumption 燃油消耗率	Boundary dimension 外形尺寸	Open type weight 机组重量
kw	A		KW	≤g/kw. h	L*W*H mm	KG
14	25.2	F2L912	16	238	1200*800*1100	480
24	43.2	F3L912	26	232	1350*770*1100	580
30	54	F4L912	35	228	1350*770*1100	580
32	57.6	F4L913	37	228	1620*800*1150	800
40	72	F4L912T	45	220	1620*770*1100	850
48	86.4	F6L912	52	228	1870*770*1100	850
48	86.4	F6L913	54	228	2000*850*1250	1100
58	104.4	F6L912T	65	228	2100*800*1200	1100
50	90	BF4L913 (电调)	62	232	1620*800*1150	800
80	144	BF6L913 (电调)	92	228	2100*850*1250	1150
110	198	BF6L913C (电调)	120	224	2100*850*1250	1150



Cummins is one of the biggest professional manufacturer of engine in the world. Which founded in 1919,Cummins id headquartered in Columbus USA. Cummins is the U.S Fortune 500 list and global famous brang. The engine power for generator is from 20kw to 2573kw.

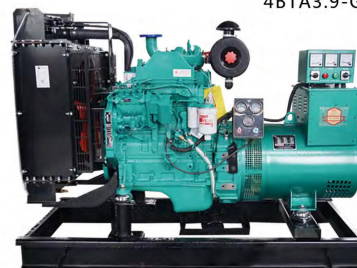
康明斯是全球最大的发动机生产厂家之一，成立于1919年，总部在美国哥伦布市，是美国五百强企业，全球知名品牌，生产用于发电机组用的发动机，功率从20KW—2573KW。

Genset 机组型号	Unit rated power 机组额定功率	Engine Model 柴油机型号	Engine 柴油功率	Cylinder Num 气缸数	Bore 缸径	Trip 行程	Oil capacity 机油容量	Consumpt 燃油消耗量	Dimensions 外形尺寸	Weight 重量
	KW		KW							
BST-15	15	4B3.9-G2	27/24	4	102	120	11	209	1700*720*120	900
BST-20	20	4B3.9-G2	27/24	4	102	120	11	209	1700*720*120	900
BST-24	24	4B3.9-G2	27/24	4	102	120	11	209	1700*720*120	900
BST-30	30	4BT3.9-G2	40/36	4	102	120	16.4	209	1800*720*120	920
BST-50	50	4BTA3.9-G2	60	4	102	120	16.4	209	1800*720*120	920
BST-75	75	6BT5.9-G2	90	6	102	120	16.4	210	2200*800*130	1180
BST-90	90	6BT5.9-G2	92	6	102	120	16.4	210	2200*800*130	1180
BST-100	100	6BTA5.9-G2	120	6	102	120	20	206	2250*830*135	1200
BST-120	120	6BTA5.9-G2	133	6	102	120	20	206	2250*830*135	1350
BST-150	150	6CTA8.3-G2	163	6	114	135	20	206	2500*860*135	2200
BST-180	180	6CTA8.3-G2	182	6	114	135	20	207	2600*880*150	2500
BST-200	200	6LTA8.9-G2	245/220	6	114	135	20	206	2600*900*150	2500
CCEC CUMMINS SERIES 重庆康明斯系列										
BST-200	200	NT855-GA	254/231	6	140	152	37	206	3000*980*176	2600
BST-220	220	MTA11-G2A	257/234	6	125	147	39	207	3000*1100*16	2650
BST-220	220	NTA855-G1	264/240	6	140	152	38.6	207	3000*980*176	2600
BST-250	250	NTA855-G1A	291/261	6	140	152	38.6	206	3100*980*176	2900
BST-300	300	NTA855-G2	321/283	6	140	152	38.6	210	3100*980*176	2900
BST-250	250	MTAA11-G3	310/282	6	140	147	39	210	3200*980*176	2650
BST-300	300	NTA855-G2A	343/313	6	140	152	38.6	210	3200*980*176	3100
BST-320	320	NTA855-G4	351/317	6	140	152	38.6	210	3200*980*176	3100
BST-320	320	NTA855-G7	377/343	6	140	152	38.6	204	3300*1380*18	3250
BST-350	350	KTA19-G2	369/336	6	159	159	50	210	3300*1250*19	3300
BST-360	360	NTA855-G7A	407	6	159	152	38.6	204	3400*1250*19	3250
BST-400	400	KTA19-G3	448/403	6	159	159	50	203	3400*1250*19	3500
BST-450	450	KTA19-G4	503/448	6	159	159	50	203.8	3400*1250*19	3650
BST-500	500	KTAA19-G5	555	6	159	159	50	203.8	3750*1960*23	4000
BST-460	460	KTAA19-G6	570	6	159	159	50	206	3750*1960*23	4200
BST-500	500	KTAA19-G6A	610	6	159	159	50	203.8	3400*1250*19	3650
BST-550	550	QSK19-G3	574	6	159	159	50	203.8	3500*1300*19	3700
BST-550	550	KTAA19-G7	610/570	6	159	159	50	206	3750*1960*23	4500
BST-560	560	KT38-G	616/560	12	159	159	135	213	4300*1700*23	8300
BST-600	600	KTAA38-G2	731/664	12	159	159	50	206	3500*1960*23	4200
BST-750	750	KTAA38-G2B	895/813	12	159	159	135	210	4500*1700*24	8700
BST-800	800	KTAA38-G2A	895/813	12	159	159	135	210	4500*1700*24	8700
BST-900	900	KTAA38-G5	970/880	12	159	159	135	201	4500*1900*24	9350
BST-1000	1000	KTAA38-G9	1190	12	159	159	135	201	4500*1900*24	9600
BST-1100	1100	KTAA50-G3	1227	12	159	159	161	215.9	5000*2000*24	9800
BST-1200	1200	KTAA50-G8	1397	12	159	159	161	215.9	5600*2000*24	10700
BST-1300	1300	KTAA50-GS8	1397	12	159	159	161	215.9	5600*2000*24	10700



Cummins engine 康明斯发动机

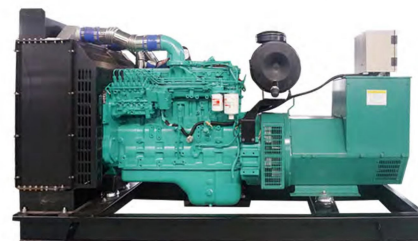
40KW ENGINE
4BTA3.9-G2



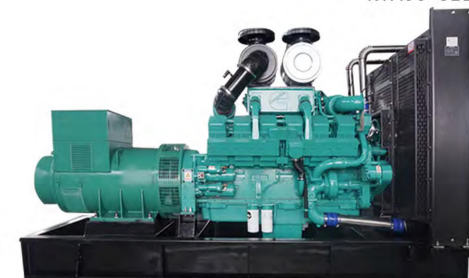
200KW ENGINE
NT855-GA



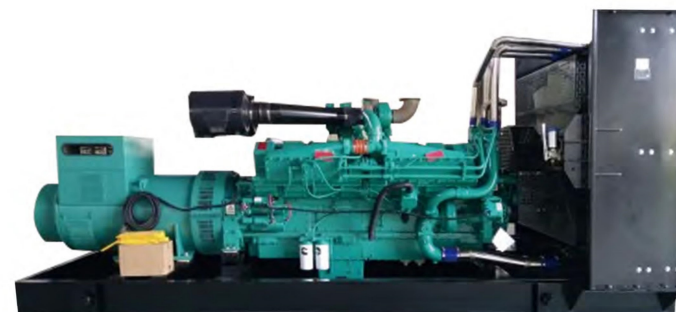
350KW ENGINE
6ZTAA13-G2



700KW ENGINE
KTA38-G2B



1200KW ENGINE
KTA50-GS8



TRAILER GENERATOR SET

拖车发电机组

Trailer generator set

The mobile trailer generator has unique and innovative design, high mobility, low center of gravity, safe braking, well-manufactured and beautiful appearance. The use of leaf spring suspension structure has reasonable selection of nodes, high strength and good rigidity. The generator is easy to move, flexible to operate, and has good airtightness and safety. And equipped with hand brake, air brake, rear taillight and other systems, in line with highway driving requirements. It is widely used in construction sites, highway, railway construction and temporary places where electricity is used.

Mobile trailer generators include hand-push, three-wheel, four-wheel, automobile power station, trailer power station, mobile low-noise power station, mobile container power station, electric engineering vehicles, etc.

拖车发电机组

移动拖车发电机组设计独具创新，机动性高、重心低、制动安全、制造精良、外形美观。采用钢板弹簧悬架结构节点选择合理、强度高、刚性好。电站移动方便、操作灵活，具有良好的密封性、安全性。并配有手刹、气刹、后尾灯等系统，符合公路的行车要求。广泛应用于建筑工地、公路、铁路建设及临时地点用电场所。

移动式拖车发电机组有手推式、三轮、四轮、汽车电站、拖车电站、移动低噪音电站、移动集装箱电站、电力工程车等。



GAS GENSET

燃气发电机组



120KW GAS GENSET



80KW GAS GENSET



50KW GAS GENSET

PUMPING UNIT

水泵发电机组



WEIFANG PUMPING UNIT



DEUTZ PUMPING UNIT



CUMMINS PUMPING UNIT

OPTIONAL CONFIGURATION

可选配置



ATS



Silent / 静音箱



Trailer / 拖车



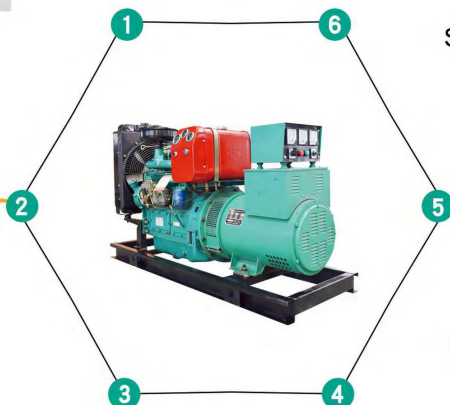
Protection control system
保护控制系统



Fuel tank / 油箱



Battery / 电池



SUCCESSFUL CASE

成功案例



CHINESE CUSTOMERS PURCHASE 21 SETS
OF WEICHAI TRAILER GENERATORS



CHINESE CUSTOMERS PURCHASE 10 SETS
OF 1000KW WEICHAI GENERATORS



LIBYA CUSTOMERS PURCHASE 16 SETS OPEN GENERATORS FOR MANY TIMES



UZBEKISTAN CUSTOMERS
PURCHASE 60 SETS
OF 30KW / 100KW / 160KW
GENERATORS

